

ERGOMAX™ MIG GUNS



Fume Extraction Solutions



SPECIFICATIONS

Amperage:	400A or 500A
Duty Cycle:	100% w/CO2 60% w/ Mixed Gas
Wire Size:	0.30" to 3/32"
Processes:	MIG (GMAW) & Flux Cored (FCAW) – Mild Steel, Stainless, & Aluminum
Applications:	General & Heavy Fabrication, Automotive, Shipbuilding
Options:	
Euro-style Adapter	Tweco, Miller, Lincoln
Hose Cover	5' or 10' Leather or Kevlar

AIR-COOLED FUME EXTRACTION MIG GUNS

ErgoMax™ MIG Guns are an essential component to creating a safe work environment. No other gun on the market removes weld fume as efficiently and effectively, meeting the ACGIH and OSHA air quality standards for manganese and hexavalent chromium. Paired with a FumeVac high pressure/high capacity vacuum extraction source, ErgoMax MIG Guns offer the highest volume throughput of any other competing guns.

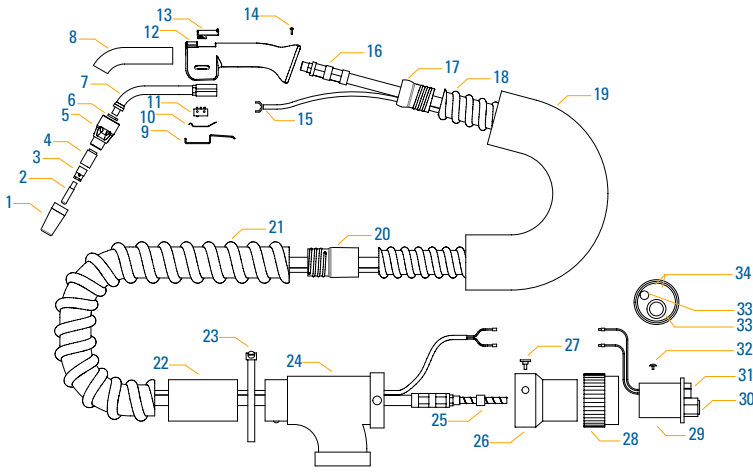
ErgoMax MIG Guns are designed to perform in the most challenging of welding environments. The lightweight design, ball-joint flexibility, and ergonomic handle ensure a semiautomatic fume gun that is easy to maneuver and adapts to all work positions. High airflow capacity in the gun minimizes heat build-up and results in a cooler, more comfortable operating temperature for users.

FEATURES & BENEFITS

- High quality, high duty cycle MIG & Flux Cored welding performance
- Durable copper alloy consumables for high conductivity, cool operation, and long life

- Rugged, lightweight polymer handle with a 360° swivel ball-joint
- High extraction flow rates minimize heat buildup for added comfort
- Chrome-plated metallic outer neck tube provides an added measure of heat dissipation for super cool operation
- Optimized fume extraction zone prevents disturbance to shielding gas
- Simple, high strength stainless steel trigger for long life and minimal cost of maintenance
- Crush and heat resistant vacuum hose with optional leather or Kevlar hose covers
- Adjustable bypass vent for airflow control in confined spaces
- Coaxial power cables feature heavy duty swaged copper connections for maximum conductivity and durability
- Low friction liners provide exceptional wire feeding performance for consistent arc starts and weld stability
- All models come standard with Euro-style connections





No.	Description	No.	Description
1	Gas Nozzle	18	Hose
2	Contact Tip	19	Hose Protective Cover
3	Gas Diffuser	20	Hose Coupler
4	Insulator	21	Reinforced Hose
5	Fume Shroud	22	Hose Coupler
6	Goose Neck Insulator	23	Hose Ring Clamp
7	Goose Neck	24	Vacuum Tee Connector
8	Outer Neck Tube	25	Weld Wire Liner
9	Stainless Steel Trigger	26	Coupler
10	Trigger Spring	27	Locking Screw
11	Microswitch	28	Euro Connector Nut
12	Handle Body	29	Coupling Block
13	Handle Vent Latch	30	Wire Liner Guide
14	Handle Screws	31	O-ring
15	Trigger Control Cable	32	Locking Screw
16	Power Cable	33	Gas Connection Nipple
17	Spherical Coupler	34	Trigger Contact Pins

**CALL YOUR REPRESENTATIVE
TODAY TO FIND THE RIGHT
VACUUM FOR YOU!**

